

NORTH CENTRAL INDIANA MENTAL HEALTH SUMMIT

Saturday, Nov. 7, 2020

8:30 a.m. - 2:30 p.m.

Virtual via Zoom, Lafayette, IN



IU School of Medicine - West Lafayette
Mental Health America Wabash Valley Region
Purdue University School of Nursing
Purdue University College of Pharmacy
Purdue University College of Veterinary Medicine

NORTH CENTRAL INDIANA MENTAL HEALTH SUMMIT

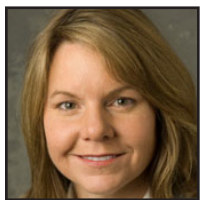
The 2020 North Central Indiana Mental Health Summit theme is Perspectives of Addiction, and we are delighted to bring you sessions from presenters from wide-ranging backgrounds and expertise. Expect to learn new ideas and strategies you can use immediately in your life and work. We welcome you to join us for a day of learning, reflection, and discovery

AGENDA | NOV. 7, 2020

8:30- 8:45 a.m.	Opening Remarks	Dr. Susan Kersey
8:45- 9:45 a.m.	Opening Session	Bias Dr. Sylk Sotto
10:00- 11:00 a.m.	Session 2	Science of Addiction Dr. David Cummins
11:15- 12:15 p.m.	Session 3	Experiences with Recovery Community Panel
12:30- 1:30 p.m.	Session 4	The Impaired Provider Rodrigo Garcia, MSN, APRN-CRNA, MBA
1:30- 2:30 p.m.	Session 5	Wrapup Panel with Speakers

NORTH CENTRAL INDIANA MENTAL HEALTH SUMMIT

2020 PRESENTERS



Clinical Assistant Professor Susan Kersey is Director of the Psychiatric Mental Health Nurse Practitioner (PMHNP) Training Program at Purdue University.

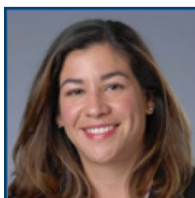
Dr. Kersey brings more than 30 years of experience working in psychiatry including inpatient psychiatric nursing and practicing as an Advanced Practice Psychiatric Nurse in multiple outpatient settings.



David Cummins, MD, FASAM. Dr. Cummins is board-certified in both addiction medicine and emergency medicine, using evidence-based approaches to help people who are experiencing addiction.



Rodrigo Garcia, MBA, APN-BC, MSN, CRNA has extensive experience in providing healthcare treatment as well as educating and advocating on the topic of addiction.



Sylk M. Sotto, EdD, MPS, MBA is interested in equity and inclusion in health-care. Her administrative, educational, and research experiences focus on

maximizing human potential at all levels of healthcare education and practice.



Representatives from 4th Dimension Recovery Home, a peer group recovery residency program, provide a personal viewpoint on the progress made and challenges faced by those living in recovery.

Thank you to our committee!

Elizabeth Akey
Purdue University
Psychology Treatment
and Research Clinics

Jeremy Ashcraft
North Central Indiana
Area Health
Education Center (AHEC)

Carolyn Kamp
Open Arms Counseling, LLC

Susan Kersey
Purdue University
School of Nursing

Carol Ott
Purdue University
College of Pharmacy

Rebecca Peters
Inner Strength Counseling

Jayne Rayman
Indiana University
School of Medicine-
West Lafayette

Julianne Stout
Indiana University
School of Medicine-
West Lafayette

NORTH CENTRAL INDIANA MENTAL HEALTH SUMMIT

North Central Indiana Mental Health Summit

Saturday, November 7, 2020,

8:30 AM - 2:30 PM, Virtual via Zoom, Lafayette, IN

Target Audience

Specialties - Nursing, Pharmacy, Psychology, Social Work

Professions - Nurse, Pharmacist, Physician, Social Worker, Technician

Overview

This conference will address health care disparities experienced by individuals affected by addiction by providing care providers and health professions learners with knowledge on genesis, experience, and effects of addiction on individuals and populations so that they may more effectively engage as professionals to help improve health outcomes for individuals and populations affected by addiction.

Objectives

- Describe the multiple causes and effects of addiction in various populations and individuals.
- Recognize how addiction is experienced by populations and individuals.
- Identify strategies for recognizing and treating patient with addiction for care providers.



JOINTLY ACCREDITED PROVIDER™
INTERPROFESSIONAL CONTINUING EDUCATION

Accreditation

In support of improving patient care, this activity has been planned and implemented by Indiana University School of Medicine, Purdue University, and AHEC. Indiana University School of Medicine is jointly accredited by the Accreditation Council for Continuing Medical Education (ACCME), the Accreditation Council for Pharmacy Education (ACPE), and the American Nurses Credentialing Center (ANCC), to provide continuing education for the healthcare team.

Nurses

Indiana University School of Medicine designates this activity for a maximum of 5.0 ANCC contact hours. Nurses should claim only the credit commensurate with the extent of their participation in the activity.

Physicians

Indiana University School of Medicine designates this live activity for a maximum of 5.0 AMA PRA Category 1 Credits™.

Physicians should claim only the credit commensurate with the extent of their participation in the activity.

Social Workers

Indiana University School of Medicine has been approved by the Indiana Social Worker, Marriage and Family Therapist and Mental Health Counselor Board to provide Category I Continuing Education program. This activity qualifies for 5.0 Category I CEU as outlined by the Indiana Behavioral Health and Human Services Licensing Board.

Pharmacists

Indiana University School of Medicine designates this activity for 5.0 ACPE contact hours. Pharmacists should only claim credit commensurate with the extent of their participation in the activity. Credit will be provided to NABP CPE Monitor within 60 days after the activity completion.

Psychology

Psychologists will receive a Statement of Participation indicating that Indiana University School of Medicine has approved this live activity for a maximum of 5.0 AMA PRA Category 1 Credit(s)™.

CE credit for veterinarians and veterinary nurses provided by Purdue University College of Veterinary Medicine

Additional Information

For questions about accessibility or to request accommodations please contact the IUSM CME office at 317-274-0104 or cme@iu.edu. One week advance notice will allow us to provide seamless access. Please ensure to specify the accommodations you need in order to participate.

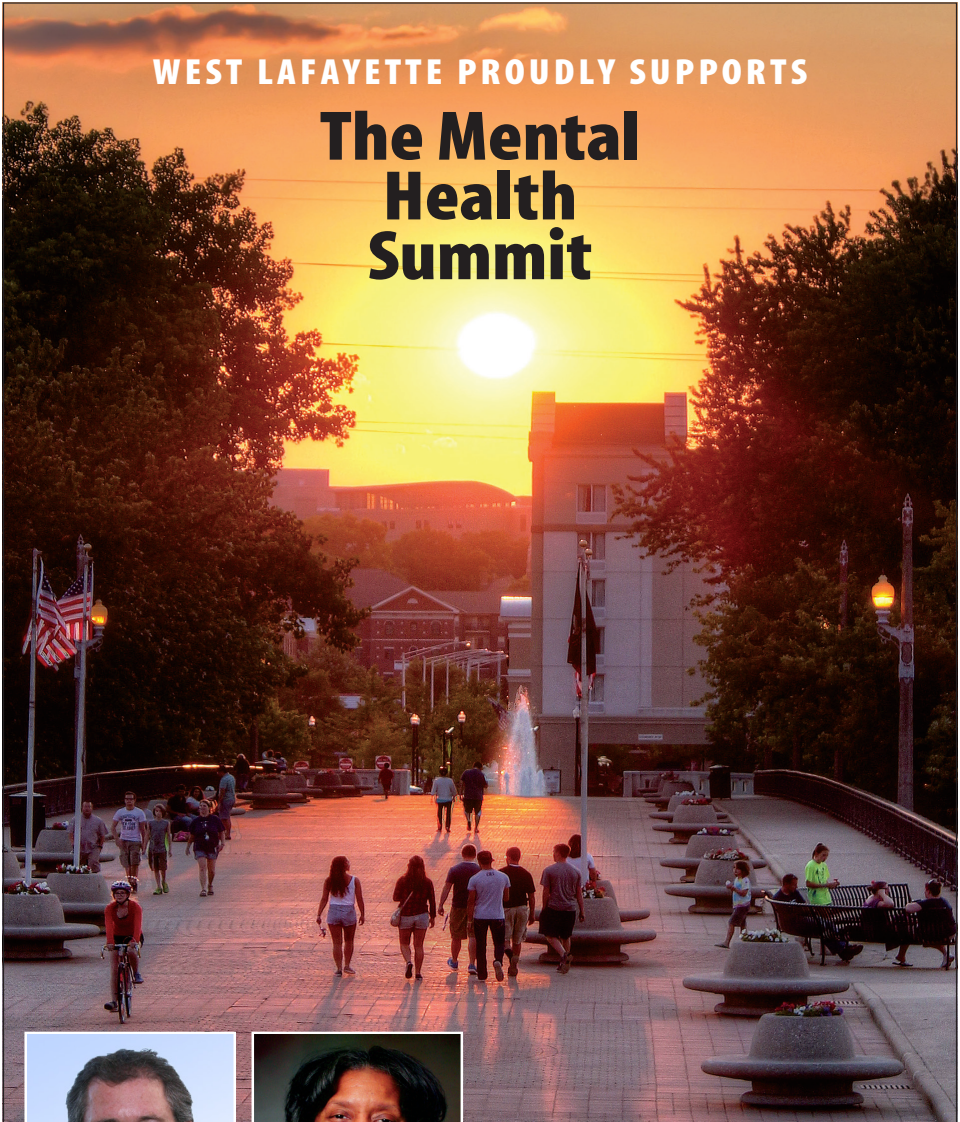
Credits

AMA PRA Category 1 Credits™ (5.00 hours), Non-Physician Attendance (5.00 hours), ACPE Contact Hours (5.00 hours), ANCC Contact Hours (5.00 hours)

Speaker disclosures available.

WEST LAFAYETTE PROUDLY SUPPORTS

The Mental Health Summit



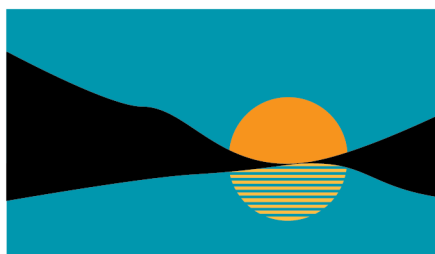
John Dennis **MAYOR**



Sana Booker **CLERK**



2020
Mental Health Summit
Support Provided By:



River Bend
HOSPITAL

Invest in your future.

**Invest in the future of
your community.**



Get a chance to work with those in the greatest need. Make an impact on your community... *and your soul.*

STARTATVALLEY.COM



Valley Oaks
HEALTH



Founded in 2010 and hosted by Fulton Economic Development Corporation (FEDCO), NCI-AHEC serves 11 north central Indiana counties.

In partnership with various agencies, extensive summer healthcare career camps, healthcare career counseling, and medical school preparedness programs provide educational opportunities to underrepresented, disadvantaged, and minority students.

FIND THEM – AHEC reaches out to under-represented minority and disadvantaged students.

TRAIN THEM – AHEC prepares clinical professions students for healthcare jobs in Indiana.

KEEP THEM – AHEC works to improve access to resources for healthcare professionals.

North Central Indiana Area Health Education Center

822 Main Street, Rochester Indiana, 46975

574.223.2212

ahec@fultondevelopment.org

www.nciahec.org